
PVI 5.6 " TFT-LCD TIMING CONTROL BOARD

1. GENERAL DESCRIPTION:

THIS COLOR TFT-LCD TIMING CONTROL BOARD APPLY TO DRIVER PVI'S **PW056XU3** COLOR TFT-LCD PANEL, IT SUPPORTS ITU-R BT.656 OR 18 BITS PARALLEL RGB INPUT INTERFACE, WITH THE BUILD-IN COLOR SPACE CONVERSION CIRCUIT , DAC AND OPERATION AMPLIFIED , THE DRIVING BOARD PERFORMS GAMMA CORRECTION AND POLARITY INVERTED FUNCTIONS TO CONVERTS THE DIGITAL DATA TO THE PROPER INTERFACE OF LCD PANEL.

2. FEATURE:

UP/DOWN DISPLAY REVERSE
LEFT/RIGHT DISPLAY MIRROR
OPERATING TEMPERATURE: -30°C~+80°C
STORAGE TEMPERATURE: -30°C~+80°C

3. INPUT/OUTPUT TERMINALS

CON1 ITU-R BT.656 SIGNAL INPUT TERMINAL (14PIN)
CON2 18 BITS PARALLEL RGB INPUT TERMINAL (31PIN)
CON5 OUTPUT TO PANL SIGNAL TERMINAL (30PIN)
CON6 INVERTER POWER INPUT TERMINAL(4PIN)
CON8 PANEL B/L POWER OUTPUT TERMINAL(2PIN)

CON1 ITU-R BT.656 SIGNAL INPUT TERMINAL (14PIN)
CONNECTOR:MOLEX 53261-1471 or Compatibility

Pin no.	Symbol	I/O	Description	Remark
1	D0	I	Digital video data input	
2	D1	I	Digital video data input	
3	D2	I	Digital video data input	
4	D3	I	Digital video data input	
5	D4	I	Digital video data input	
6	D5	I	Digital video data input	
7	D6	I	Digital video data input	
8	D7	I	Digital video data input	
9	CLK	I	Digital Video Input Clock	
10	GND	I	Ground	
11	GND	I	Ground	
12	5V	I	power	
13	L/R	I	Left and Right mirror control	
14	U/P	I	Up and Down reverse control	

CON2 18 BITS PARALLEL RGB INPUT TERMINAL (31PIN)**CONNECTOR:HRS DF9-31P-1V or Compatibility**

Pin no.	Symbol	Pin no.	Symbol	Pin no.	Symbol	Pin no.	Symbol
1	GND	9	R3	17	G4	25	B5
2	CLK	10	R4	18	G5	26	GND
3	HS	11	R5	19	GND	27	DE
4	VS	12	GND	20	B0	28	5V
5	GND	13	G0	21	B1	29	5V
6	R0	14	G1	22	B2	30	L/R
7	R1	15	G2	23	B3	31	U/D
8	R2	16	G3	24	B4		

CON6 INVERTER POWER INPUT TERMINAL(4PIN)**CONNECTOR:JST S4B-XH-A OR Compatibility**

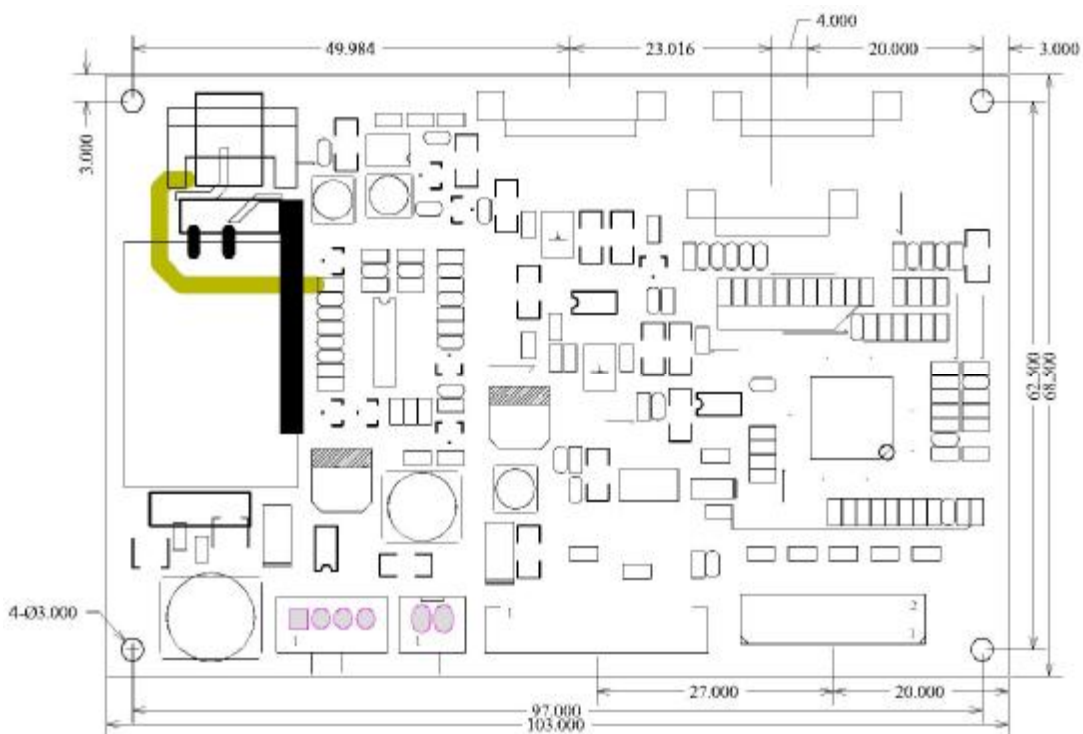
Pin no	Pin Name	I/O	Pin Description	Remark
1	VCC	I	12V	
2	GND	I	Ground	
3	ON/OFF	I	ON=+5v OFF=0V	
4	NC		No Connect	

CON8 PANEL B/L POWER OUTPUT TERMINAL(2PIN)**CONNECTOR:JST SM02B-BHSS-1-TB or Compatibility**

Pin no	Pin Name	I/O	Pin Description	Remark
1	VL1	I	Lamp Low Voltage	
2	VL2	I	Lamp High Voltage	

Caution:**INPUT SIGNAL CAN BUT SELECT ONE, ITU-R BT.656 OR 18 BITS PARALLEL RGB**

4. DRIVER BOARD OUTLINE DRAWING:



Description:

- Outline: 103 * 68.5 * 9.2mm
- Top layer high (Max): 8mm
- Board thickness: 1.2mm
- Four screw holes: ϕ 3.0mm

5. MODULE PHOTO:



6: Revision History

Revision History		
REV.	Issued Date	Revision Contents
0.1	Apr 16, 2008	new